



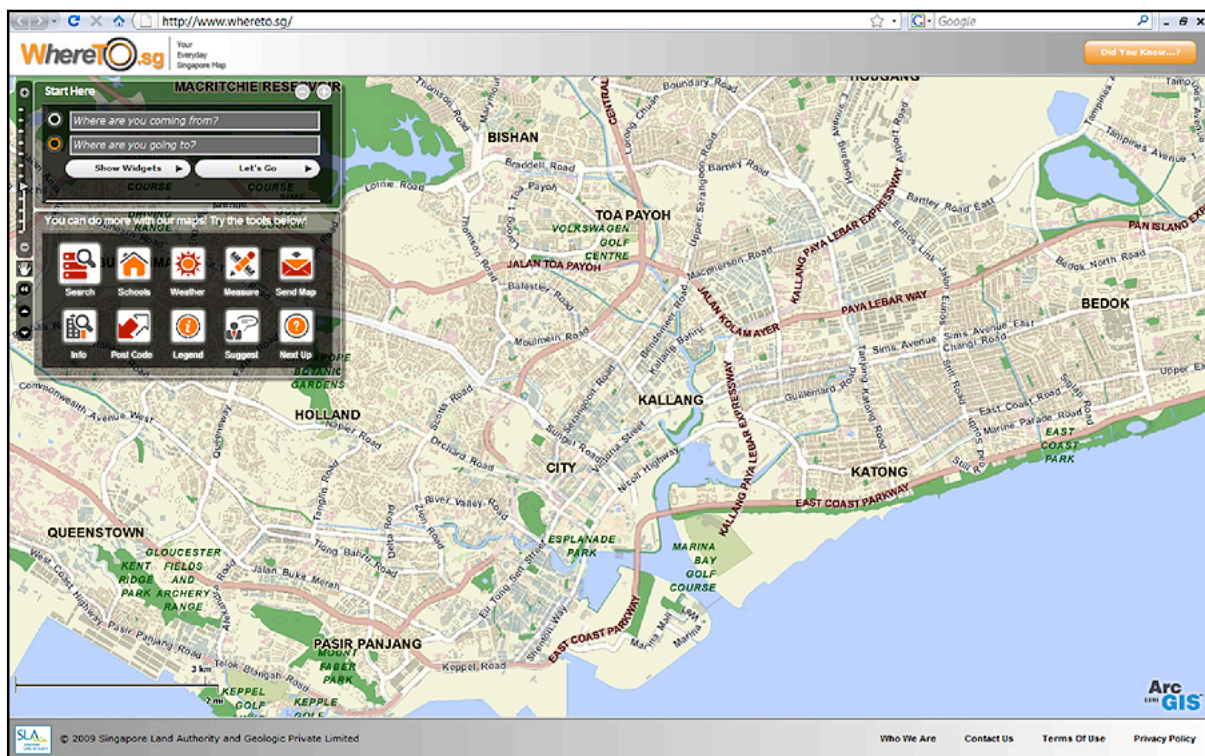
Boustead Singapore Limited
(Co. Reg. No. 197501036K)

67 Ubi Avenue 1, #02-01
StarHub Green
Singapore 408942

BOUSTEAD SUBSIDIARY LAUNCHES WWW.WHERETO.SG

Singapore, 6 January 2010 – Mainboard-listed Boustead Singapore Limited (“Boustead” or the “Group”), a progressive global infrastructure-related engineering services and geo-spatial technology group has today launched a new and innovative interactive map portal of Singapore, WhereTo.sg (www.wheretosg.com), under its subsidiary, Geologic Pte Ltd (“Geologic”).

Powered by ESRI’s ArcGIS platform, WhereTo.sg can be accessed by the public for free and draws its information from authoritative sources including the Singapore Land Authority, and the Accounting and Corporate Regulatory Authority (“ACRA”). Not only does the site provide instructions on the quickest or shortest way to get from destination-to-destination via various modes of transport; it also has the capability to display comprehensive information on the nearest buildings, businesses, banking facilities, MRT stations, petrol stations, public amenities, schools and weather within the vicinity.



WhereTo.sg Screenshot © Singapore Land Authority and Geologic Pte Ltd

Along with an ensemble of unique features, WhereTo.sg allows users to search for full business and company listings from ACRA and view the locations of these listings on the map.

General Manager of Geologic, Mr Thomas Pramotedham said, "WhereTo.sg is more than just an interactive map. It is a Singapore portal that draws information from the authorities and offers that information to its users in a format that is useful for their day-to-day activities."

In a joint marketing campaign, Geologic and 7-Eleven Singapore will be building up public awareness of WhereTo.sg from 6 January to 16 February 2010.

WhereTo.sg is a showcase of ESRI's ArcGIS technology in a consumer setting, and of the expertise of Boustead's Geo-Spatial Technology Division, comprising ESRI Australia, ESRI South Asia and Geologic.

The Division helps clients to derive insights from their own business data, ranging from plotting retail outlets geographically, representing annual sales or other key performance indicators by postal code or other administrative jurisdictions, to applying geographical analysis and statistical techniques in search of zones of weak customer reach.

ESRI's ArcGIS technology – the world's leading geographic information systems and location intelligence solutions – is exclusively distributed by the Group to major markets across Australia and South East Asia (including Singapore, Malaysia and Indonesia), and has been utilised by numerous government agencies to effectively plan, develop and manage key infrastructure and resources in countries.

-- End of media release --

About Boustead Singapore Limited

Established in 1828, Boustead Singapore Limited is a progressive global Infrastructure-Related Engineering Services and Geo-Spatial Technology Group listed on the Singapore Exchange. Focusing on the engineering and development of key infrastructure supporting economic growth in the public and private sectors of emerging markets, our strong suite of Engineering Services comprises:

- Energy-Related Engineering;
 - Oil & Gas/Petrochemicals;
 - Solid Waste Energy Recovery;
- Water & Wastewater Engineering;
- Real Estate Solutions;
 - Industrial Real Estate Solutions; and
 - New Township.

Under our Geo-Spatial Technology arm, we provide professional services and exclusively distribute ESRI geo-spatial technology – the world’s leading geographic information systems and location intelligence solutions – to major markets across Australia and South East Asia. Our location intelligence solutions are essential to effectively plan, deploy and manage key infrastructure and resources in countries.

With a vast global network stretching across Asia, Australia, Europe, Africa and the Americas, Boustead is ready to serve the world. To date, Boustead has undertaken infrastructure-related projects in 79 countries globally.

In 2008 and 2009, Boustead was recognised in the prestigious Forbes Asia 200 Best Under A Billion as one of the Asia Pacific’s 200 best public-listed corporations under US\$1 billion in revenue.

Visit us at www.boustead.sg.

About Geologic Pte Ltd

Geologic Pte Ltd is a leading geographical business intelligence company in Asia and the creator of WhereTo.sg, a new and innovative interactive map portal of Singapore. Together with ESRI Australia and ESRI South Asia, Geologic forms a part of the Geo-Spatial Technology arm of Boustead.

Contact Information

For Boustead Singapore Limited

Mr Keith Chu
Vice President – Corporate Marketing & Investor Relations
Tel: +65 6747 0016 ext 112
DID: +65 6242 9362
Fax: +65 6741 8689
Email: keith.chu@boustead.sg

For Geologic Pte Ltd

Mr Thomas Pramotedham
General Manager
Tel: +65 6742 8622 ext 630
Fax: +65 6742 1922
Email: thomasp@esrisa.com